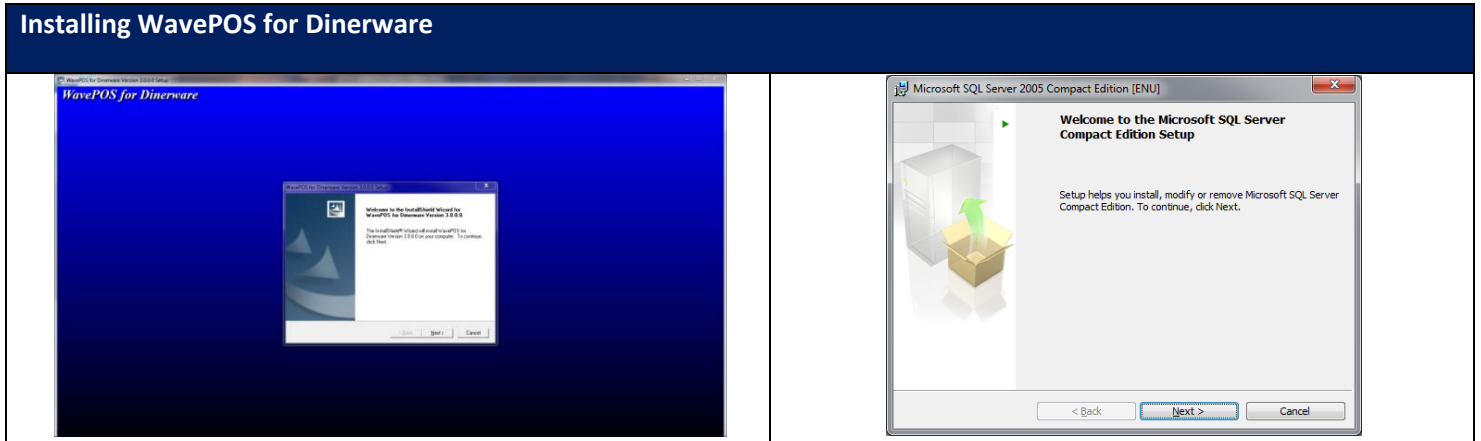
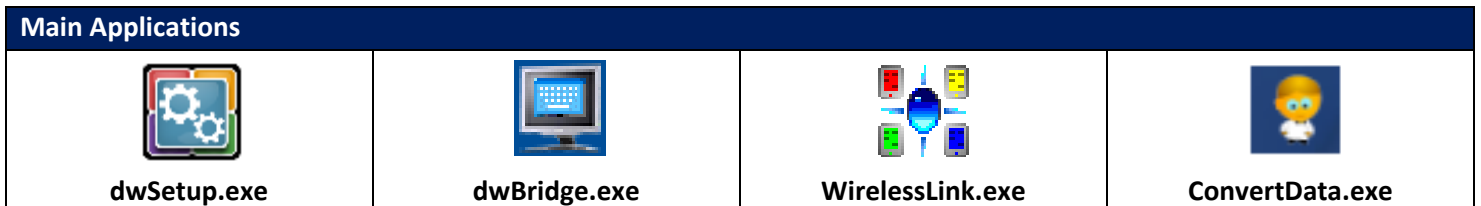


# WavePOS for Dinerware Installation and Setup Guide

This guide provides installation instructions for the WavePOS for Dinerware application. Make sure Dinerware 3.1.1 or later is installed and running on the same computer.

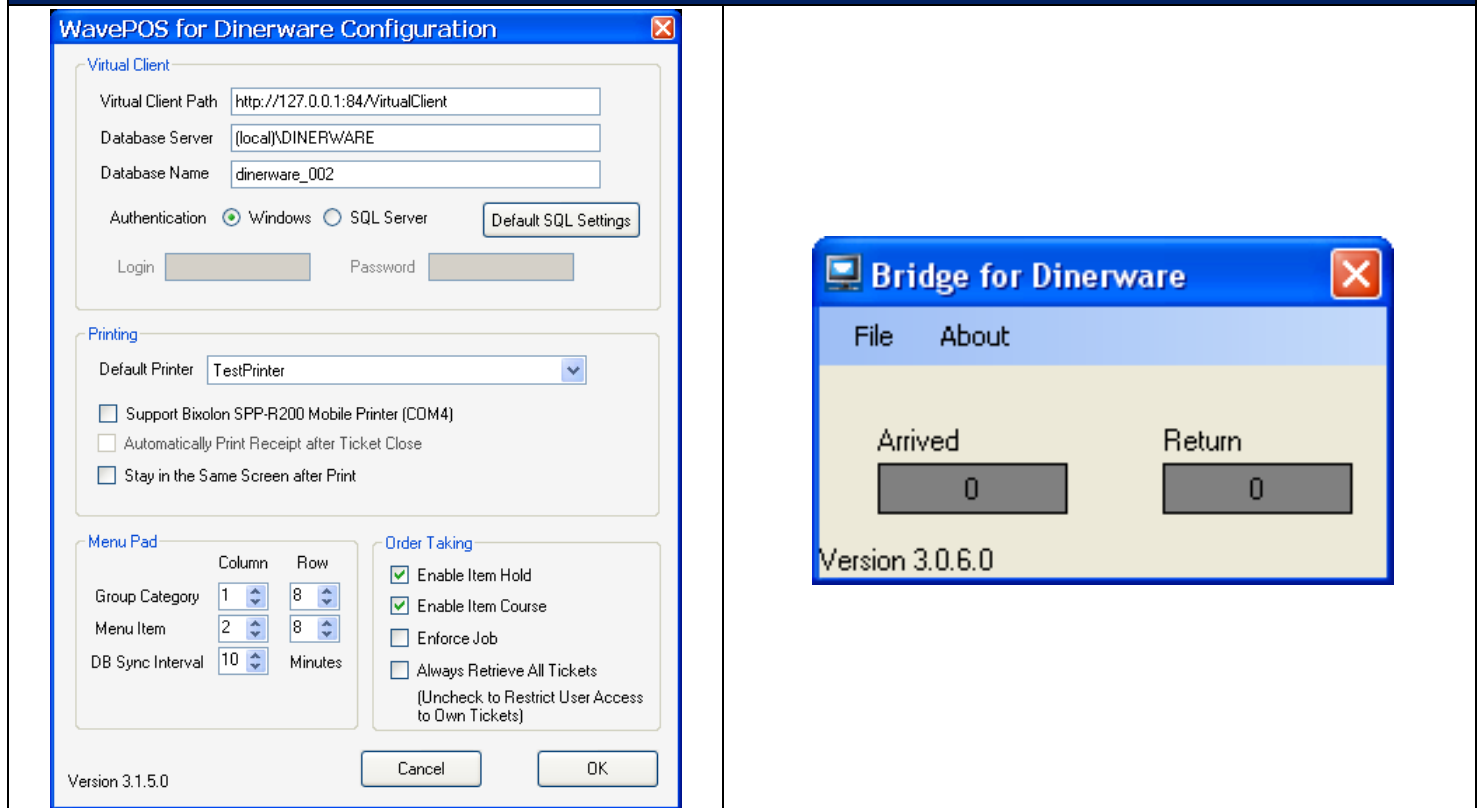


1. Run **WavePOS\_for\_Dinerware\_Setup.exe** and allow program access if User Account Control is prompted.
2. Accept all defaults with the installation by following the instructions.
3. After installation, the installer for **Microsoft SQL Server 2005 Compact Edition** will prompt. Install it by following the instructions. Once installation is completed, "WavePOS for Dinerware" folder is created on the desktop with the following application shortcuts:



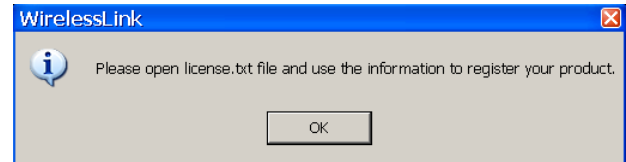
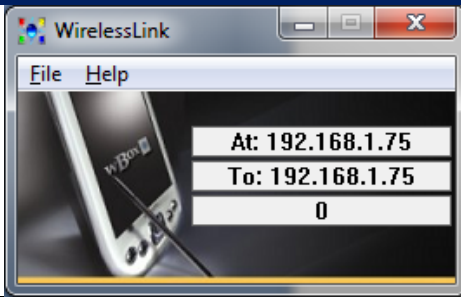
- **dwSetup**: Use this tool to setup WavePOS for Dinerware for the first time. The Brain settings are automatically loaded. Click OK to save all the settings for the first time.
- **dwBridge**: Interface application between WavePOS handhelds and the brain. dwBridge is required to be running for the handheld to communicate to the Brain
- **WirelessLink**: Centralized communication management for all handhelds. Handles all communication and data transfer to and from handheld.
- **ConvertData**: Database conversion tool that converts and synchronizes all Dinerware data to the database used by the handhelds. Running dwBridge will automatically execute ConvertData, so manually running ConvertData is not required. Use this tool to manually initiate synchronization.

## Configuring and Testing WavePOS for Dinerware



4. Run **dwSetup.exe** and make sure the database server and database name fields matches the settings with the Brain and click **OK** to automatically run **ConvertData**.
5. Once **ConvertData** finishes successfully, run **dwSetup.exe** again; the printer settings and list should now be imported from Dinerware.
6. Additional Settings:
  - **Printing:** Setup the default printer by selecting it from the list. If you are using mobile/Bluetooth printer, enable it accordingly under Printing.
  - **Menu Pad:** adjust menu pad dimensions
  - **Order Taking:**
    - **Enable Hold:** enabled by default, allows users to use the kitchen hold function
    - **Enable Course:** enabled by default, allows user to use coursing function
    - **Enforce Job:** disabled by default, only use it when all employees have job properly assigned
    - **Always Retrieve All Tickets:** disabled by default, enable to retrieve and display all tickets to all handheld users
7. Click OK to save the settings, and make sure Convertdata.exe starts and finishes with no errors.
8. Run dwBridge.exe.

## Registering WavePOS for Dinerware



9. Run **WirelessLink.exe**, and when the message box is prompt click **Ok**.
10. Open “**C:\WaveSoft\wavePOSSDK\Utility\license.txt**” file and copy the license code
11. Submit a license request to Dinerware using the license request form on Dinerware’s partner portal as usual. **Important:** This needs to happen before requesting a license file from WaveSoft to enable the handhelds to work.
  - Dinerware license request form will now have a dropdown box for the number of handhelds as well as the number of workstations. Enter the appropriate number of workstations and handhelds required in each box
  - Dinerware will send a Dinerware license file as they currently do today and bill the dealer for all Dinerware and WaveSoft licenses
  - Dinerware will also send WaveSoft an order confirmation of this license request
12. Submit a license request to WaveSoft by filling the license request form on [“http://www.wavesoft.com/dinerware”](http://www.wavesoft.com/dinerware) by following the steps below:
  - Click on “**Online Registration**” and fill in your contact information. Please make sure the email address is correct as it will be used to send the license file to
  - Enter the number of required handheld licenses, select whether you would like to use payment and as well the “**Registration Number/ID**”. The ID is available and generated when WirelessLink is first run, and it is available at C:\WaveSoft\WavePOSSDK\Utility\License.txt
  - Enter the Restaurant name, address, and phone number and other information. If you would like to make additional requests or any special instructions such as please enter them in additional remarks.
  - Click “**Preview**” and review the information
  - After confirming the information, click “**Confirm & Submit Registration**”
13. Once obtained the **license.wps** file from WaveSoft, put it under “C:\waveSoft\WavePOSSDK\Utility\” folder, and restart **WirelessLink.exe**.